



## Trex Railing / Outdoor Lighting Technical Guide

Revision 06.12.2017

# Introducing the Trex® Railing Lineup

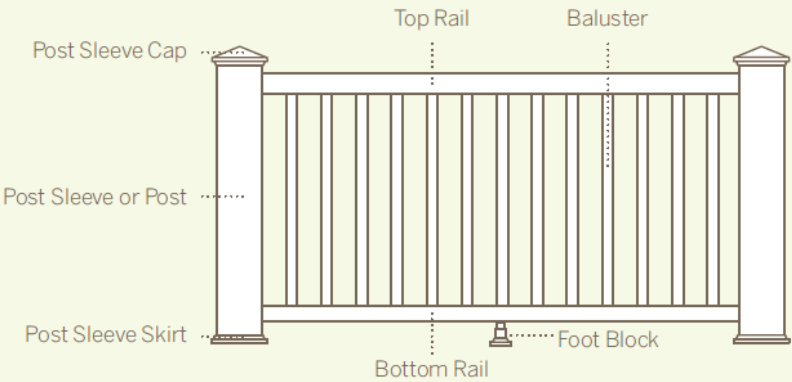
Compare design options, performance and more



	BEST	BETTER	GOOD
	<b>TrexTranscend®</b> RAILING	<b>TrexReveal™</b> ALUMINUM RAILING	<b>TrexSelect®</b> RAILING
Material	High-performance composite with a fade-resistant shell	Aluminum	High-performance composite
Color choices	7	3	1
Top and bottom rail styles	3	1	1
Baluster options	3 plus glass panels	2	1
Hidden bracket system	✓		
25-Year Limited Residential Warranty*	✓	✓	✓
Coordinates with Trex® DeckLighting™	✓	✓ if used with Trex post sleeves	✓
Easy soap & water cleaning	✓	✓	✓
Compatible with all Trex decking lines	✓	✓	✓

# Railing—a lot easier than it looks

Each section of Trex® railing is comprised of the pieces shown below. On the following pages, we designate these components with a numbered process (3-step or 5-step) for easy tracking as you plan.



- TREX® POST COMPONENTS
- TRANSCEND® RAILING
- REVEAL™ RAILING
- TREX SELECT® RAILING

## Trex Component Options

Trex post sleeves, post sleeve caps and post sleeve skirts are the starting points of our railing lines. They are available in the seven Transcend® railing colors.

1

POST SLEEVE

2a

POST SLEEVE CAP

Flat

Pyramid

Available with or without DeckLighting™

2b

POST SLEEVE SKIRT


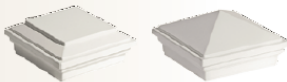



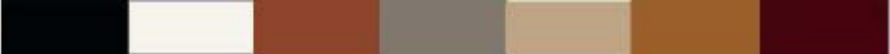
AVAILABLE COLORS



## Components that can be shared across ALL Trex Railing Lines

### Trex Post Sleeves, Caps & Skirts

- These components can be used as steps 1 & 2 for all Trex railing lines.

STEP	COMPONENT	DESCRIPTION	ITEM NUMBER
1	 <p>Each 4x4 and 6x6 post sleeve fits over a 4x4 pressure treated post or equivalent post mount.</p>	4" x 4" x 39" Post Sleeve [4.45" x 4.45" x 40" (113 mm x 113 mm x 1016 mm) external dimensions]	XX040439APS
		4" x 4" x 108" Post Sleeve [4.45" x 4.45" x 108" (113 mm x 113 mm x 2743 mm) external dimensions]	XX0404108APS
		6" x 6" x 39" Post Sleeve [5.5" x 5.5" x 39" (140 mm x 140 mm x 991 mm) external dimensions]	WT060639APS
		6" x 6" x 108" Post Sleeve [5.5" x 5.5" x 108" (140 mm x 140 mm x 2743 mm) external dimensions]	WT0606108APS
2a	 <p>Also available with LED lighting. See page 39.</p>	Flat 4" x 4" Post Sleeve Cap (12/box) Pyramid 4" x 4" Post Sleeve Cap (12/box) [4.55" x 4.55" (114 mm x 114 mm) internal dimensions]	XXSQCAP4X4 XXPYCAP4X4
		Flat 6" x 6" Post Sleeve Cap (12/box) Pyramid 6" x 6" Post Sleeve Cap (12/box) [5.6" x 5.6" (144 mm x 144 mm) internal dimensions]	WTSQCAP6X6 WTPYCAP6X6
2b		4" x 4" Post Sleeve Skirt (12/box) [4.55" x 4.55" (114 mm x 114 mm) internal dimensions] 6" x 6" Post Sleeve Skirt (12/box) [5.6" x 5.6" (144 mm x 144 mm) internal dimensions]	XXSKIRT4X4 WTSKIRT6X6
ACCESSORY		Post Surface Mount for 36" (914 mm) Rail Height (1/box) Post Surface Mount for 42" (1067 mm) Rail Height (1/box) Post Surface Mount Hardware—Concrete (10 kits/box) Post Surface Mount Hardware—Wood (10 kits/box)	POSTMOUNT36 POSTMOUNT42 POSTHWDWCONC POSTHDDWOOD
ACCESSORY		Adjustable Foot Blocks (50/box)—White Adjustable Foot Blocks (50/box)—Colored	RWFTBLK XXFTBLK
<p>XX = COLOR PREFIX:    WT Classic White    FP Fire Pit    RS Rope Swing    VL Vintage Lantern                                  BK Charcoal Black    GP Gravel Path    TH Tree House</p> <p>AVAILABLE COLORS</p> 			



STEP

1



STEP

2a



STEP

2b





## ALUMINUM ADA HANDRAIL



- 1 13/8" x 8' Hand Rail
- 2 Post Return
- 3 Collar

- 4 Wall Mount
- 5 36 Degree Elbow
- 6 90 Degree Wall Return

Charcoal Black

Bronze

Classic White



## ALUMINUM ADA HANDRAIL

### XXALADARAIL8

**Description:** 1-3/8" X 8' Hand Rail



### Bill of Materials

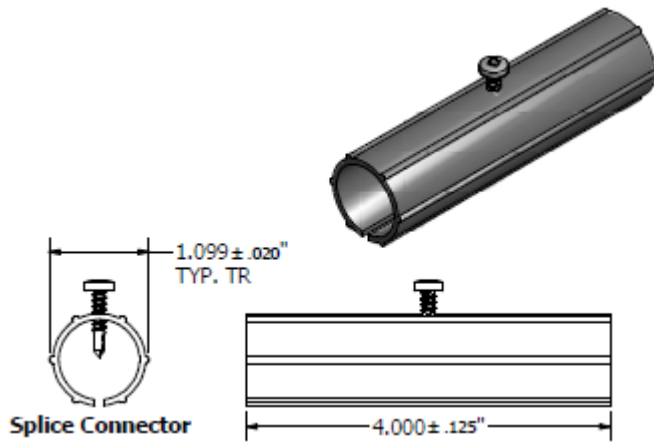
Qty (1) 96" 1-3/8" Aluminum ADA Handrail



## ALUMINUM ADA HANDRAIL

### XXALINTCONN

**Description:** Internal Connector



### Bill of Materials

Qty (1) Internal Connector

Qty (1) Spacer Screw (keeps equal amount of 1-3/8" rail on each side)

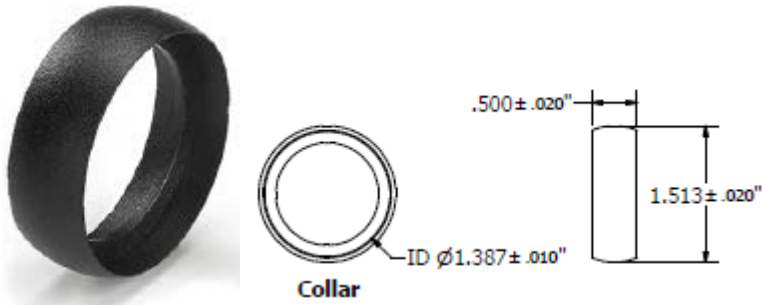
Qty (1) Collar



## ALUMINUM ADA HANDRAIL

XXALADACL

**Description:** Collar



### Bill of Materials

Qty (1) Aluminum Collar

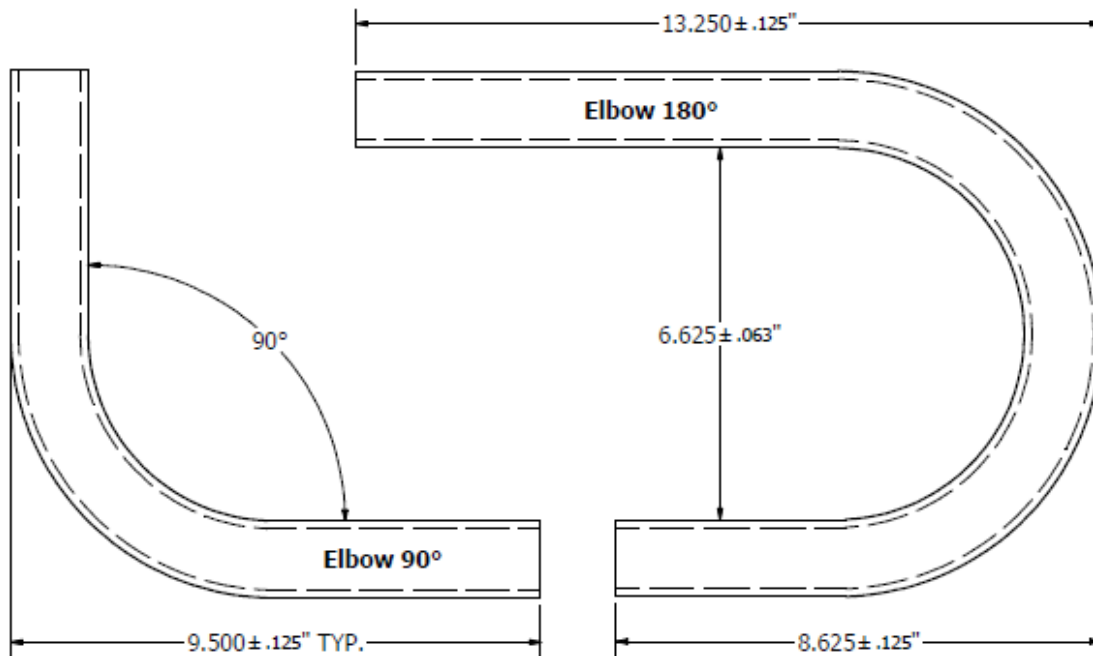




## ALUMINUM ADA HANDRAIL

### XXALADACCANE

**Description:** 1-3/8" 180° Post Return ("Candy Cane")



### Bill of Materials

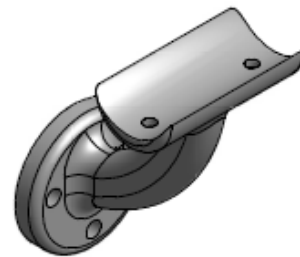
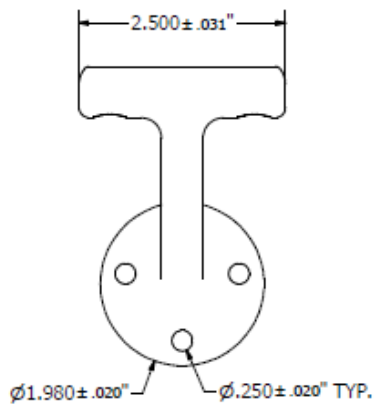
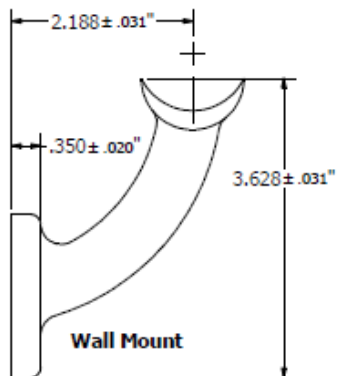
Qty (1) 1-3/8" 180° Post Return



## ALUMINUM ADA HANDRAIL

XXALADAWMNT

**Description:** Wall Mount



### Bill of Materials

Qty (1) Wall Mount

Qty (5) Aluminum Screws

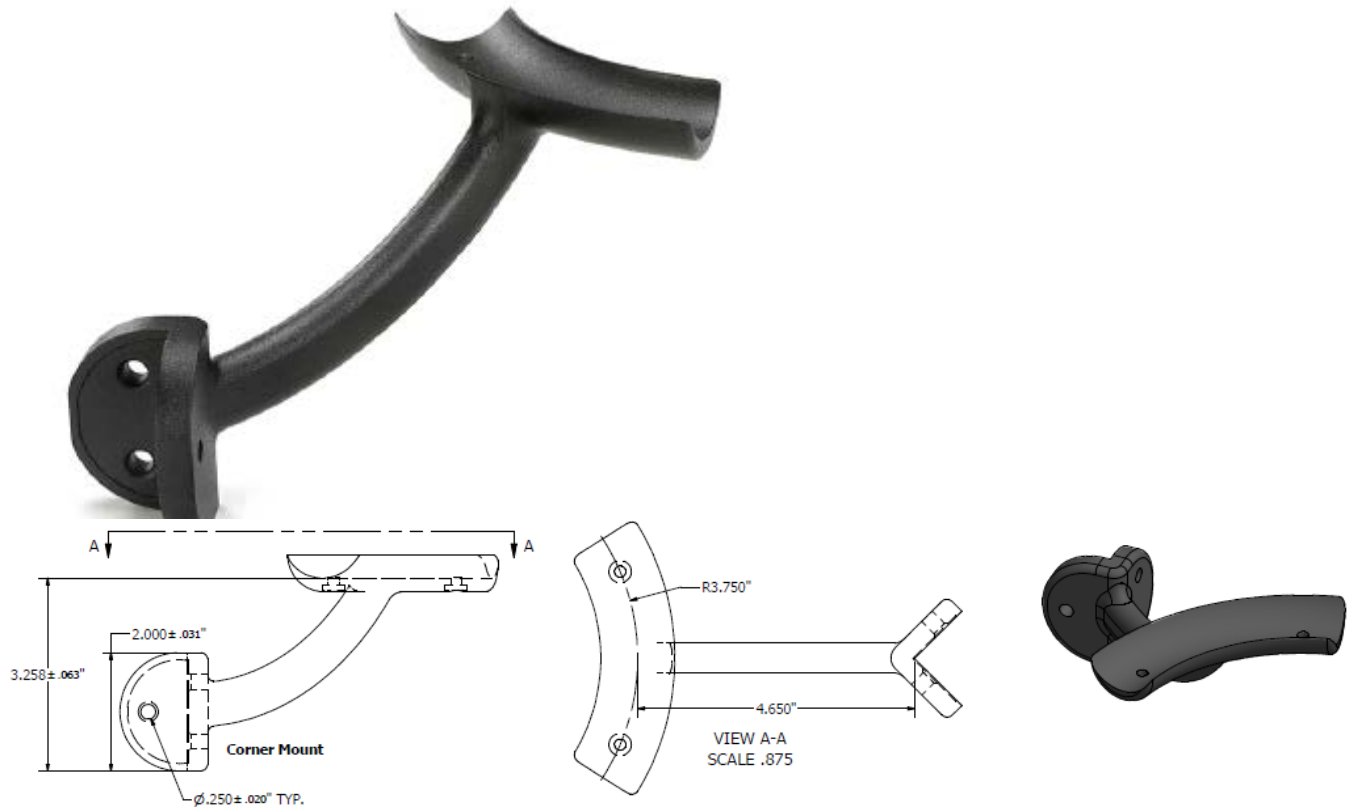
Qty (3) Wood Screws



## ALUMINUM ADA HANDRAIL

### XXALADAICORNER

**Description:** Inside Corner Mount



### Bill of Materials

Qty (1) Inside Corner Mount

Qty (5) Aluminum Screws

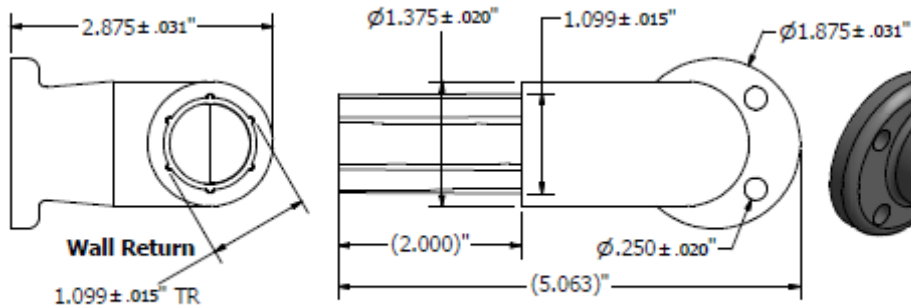
Qty (3) Wood Screws



## ALUMINUM ADA HANDRAIL

XXALADA90WR

**Description:** 90° Wall Return



### Bill of Materials

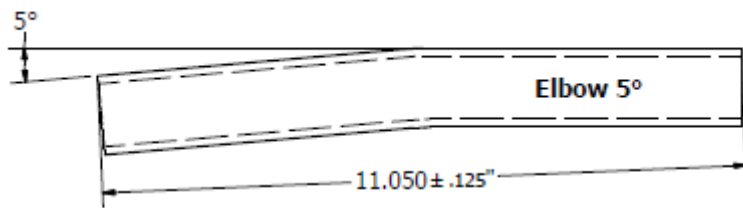
- Qty (1) Inside Corner Mount
- Qty (2) Aluminum Screws
- Qty (1) Aluminum collar



## ALUMINUM ADA HANDRAIL

XXALADA05ELB

**Description:** 05° Elbow



### Bill of Materials

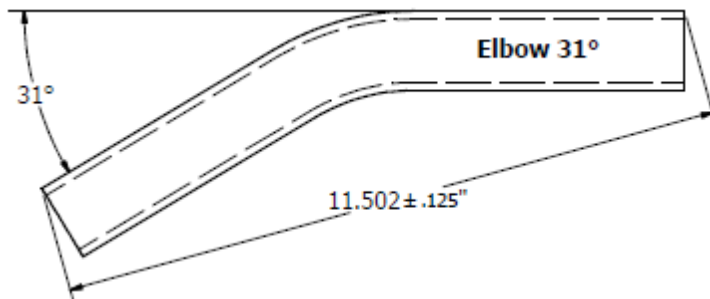
Qty (1) 05° Elbow



## ALUMINUM ADA HANDRAIL

**XXALADA31ELB**

**Description:** 31° Elbow



### Bill of Materials

Qty (1) 31° Elbow

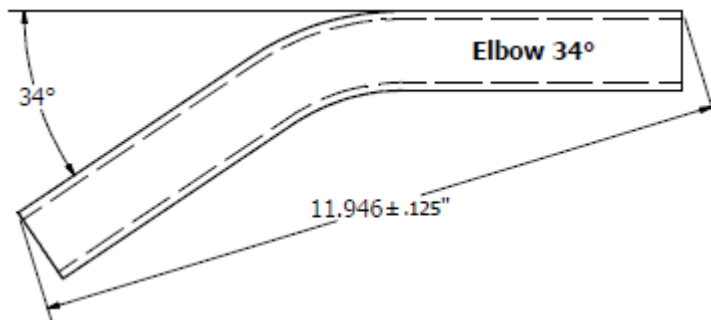




## ALUMINUM ADA HANDRAIL

**XXALADA34ELB**

**Description:** 34° Elbow



### Bill of Materials

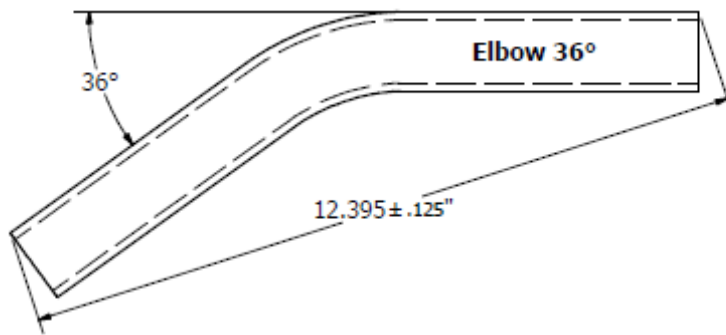
Qty (1) 34° Elbow



## ALUMINUM ADA HANDRAIL

**XXALADA36ELB**

**Description:** 36° Elbow



### Bill of Materials

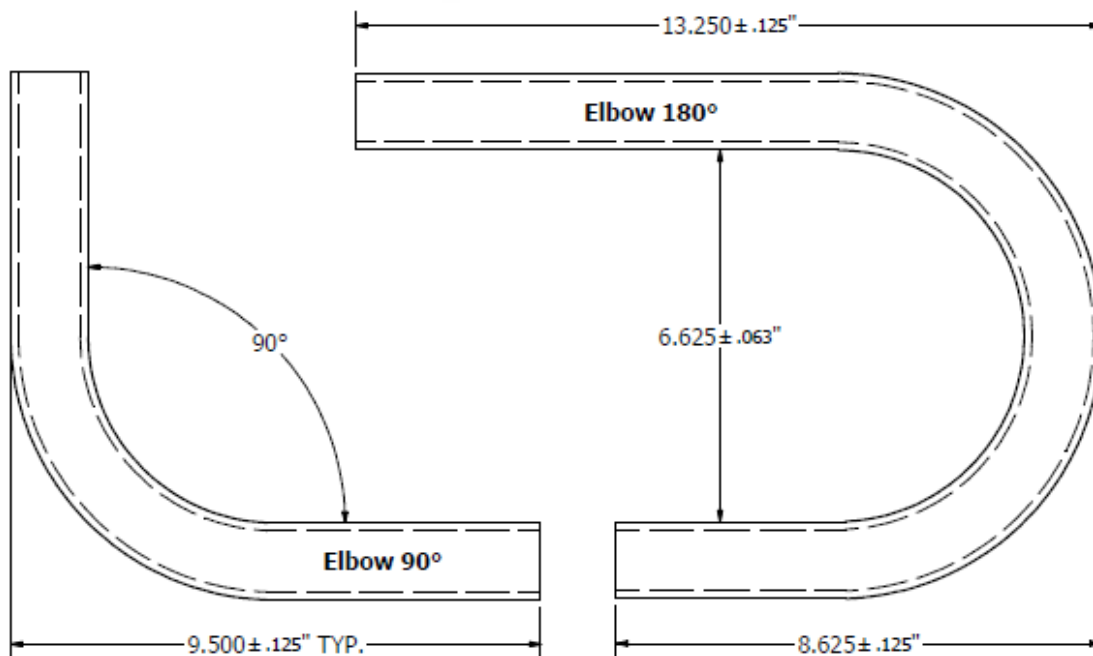
Qty (1) 36° Elbow



## ALUMINUM ADA HANDRAIL

**XXALADA90ELB**

**Description:** 90° Elbow



### Bill of Materials

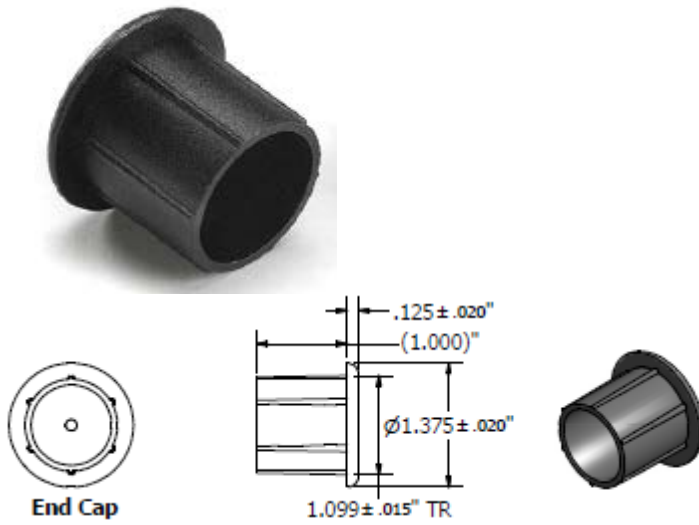
Qty (1) 90° Elbow



## ALUMINUM ADA HANDRAIL

### XXALADACAP

**Description:** 1-3/8" End Cap



### Bill of Materials

Qty (1) 1-3/8" End Cap

# Trex® Accessories

**Trex Part #: ROUTBIT**

**Description:** Trex Router Bit (creates hidden fastener groove on square-edged boards)



## **Bill of Materials**

Qty (6) Trex Router Bits

# Trex® Fasteners

**Trex Part #: CONNECTCLIP**  
(16 boxes – 50 Sq. Ft each) (1440 clips)

**Trex Part #: CLIPPAIL**  
(500 Sq. Ft Bucket) (900 clips)

**Description:** Trex Stainless Hidden Fasteners



## Bill of Materials

Qty (Various) Trex Stainless Hidden Fasteners



# Trex® Fasteners

**Trex Part #: UNIVCONCLIP**  
(16 boxes – 50 Sq. Ft each) (1440 clips)

**Trex Part #: DA00002**  
(500 Sq. Ft Bucket) (900 clips)

**Trex Part #: ELVUNIVCLIP\***  
(16 boxes – 50 Sq. Ft each) (1440 clips)  
*\*Designed for use with Elevations*

**Description:** Trex Universal Hidden Fasteners



## Bill of Materials

Qty (Various) Trex Hidden Fasteners

# Trex® Fasteners

**Trex Part #: UNIVSTARTCLIP**  
400 Sq. Ft Bags (360 clips)

**Trex Part #: ELVSTARTCLIP**  
400 Sq. Ft Bags (360 clips)

**Description:** Trex Stainless Start Clips

*Wood Framing Version*



*Elevations Version*



## **Bill of Materials**

Qty (Various) Trex Stainless Start Clips

# Trex<sup>®</sup> GATES

**Trex Part #: XX36SQADJGATE (36" Square)**

**Trex Part #: XX36RDADJGATE (36" Round)**

**Trex Part #: XX42SQADJGATE (42" Square)**

**Trex Part #: XX42SQADJGATE (42" Round)**

**Description:** Trex Aluminum (Width-Adjustable) Gate



## **Bill of Materials**

Qty (1) Welded Gate Panel

Qty (2) Pre-punched 2" Gate Posts

Qty (2) 2" Gate Post Caps

Qty (16) Aluminum Screws

*Gate hardware NOT included*

# Trex® GATES

**Trex Part #: BKGATEHW**

**Description:** Trex Gate Hardware



## **Bill of Materials**

Qty (2) Glass Filled Nylon Hinges (stainless internals)

Qty (1) Locking latch with keys

Qty (18) Aluminum Screws

Qty (10) Wood Screws

*Screws pictured above are for illustration purposes only, actual product may vary*



## SURFACE MOUNT POSTS

**Trex Part #:** ALPOSTMOUNT36

**Trex Part #:** ALPOSTMOUNT42

**Description:** Trex Aluminum Surface Mount Posts



### Bill of Materials

Qty (2) Aluminum inserts with set screws

Qty (1) 2.5" IRC-compliant aluminum post with base



## SURFACE MOUNT POSTS

**Trex Part #:** ALPOSTHWDECK

**Description:** Surface Mount Post Attachment Hardware for Wood Substructure

**Purpose:** Surface Mount Hardware necessary to achieve compliant post attachment



### Bill of Materials

Qty (1) Aluminum Backer Plate

Qty (4) HG Carriage Bolts

Qty (4) HG Washers & Nuts





## SURFACE MOUNT POSTS

**Trex Part #:** ALPOSTHWCONC

**Description:** Surface Mount Post Attachment Hardware for Concrete

**Purpose:** Surface Mount Hardware necessary to achieve IRC compliant post attachment



### Bill of Materials

Qty (4) 304SS Wedge Anchors

Qty (4) 304SS Nuts

Qty (4) 304SS Washers



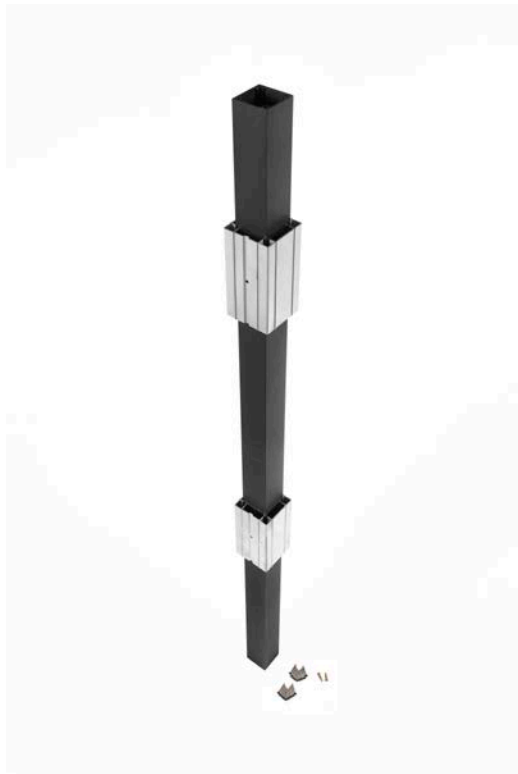
## JOIST MOUNT POSTS

*(for use with composite sleeve)*

### CPJMNTPOST63

**Description:** Trex 63" Aluminum Joist Mount Post

**Purpose:** Eliminates wood 4X4 in Elevations and wood substructures



### Bill of Materials

- Qty (1) 63" Aluminum post (*cut-to-length*)
- Qty (2) Aluminum inserts with set screws
- Qty (2) 1/2" HG Bolts, washers and nuts (*not pictured*)
- Qty (1) Bolt spacing template
- Qty (16) Aluminum screws



**Trex Part #:** WTRD0636HSELK / WTRD0836HSELK  
WTRD0642HSELK / WTRD0842HSELK

**Description:** 6ft / 8ft x 36" Rail Kit with Round Balusters - Horizontal  
6ft / 8ft x 42" Rail Kit with Round Balusters - Horizontal



**Bill of Materials**

Qty (1) Horizontal Top Rail  
Qty (1) Horizontal Bottom Rail  
Qty (14) 0.75" Round Balusters (**for 6ft Kit**)  
Qty (20) 0.75" Round Balusters (**for 8ft Kit**)  
Qty (4) Horizontal Brackets  
Qty (8) Bracket to Post fasteners  
Qty (12) Bracket to Rail fasteners  
Qty (1) Adjustable "2017 Relaunch" Footblock



**Trex Part #: WTRD0636SSELK / WTRD0836SSELK  
WTRD0842SSELK**

**Description:** 6ft / 8ft x 36" Rail Kit with Round Balusters - Stair  
8ft x 42" Rail Kit with Round Balusters - Stair



**Bill of Materials**

Qty (1) Stair Top Rail  
Qty (1) Stair Bottom Rail  
Qty (12) 0.75" Round Balusters (**for 6ft Kit**)  
Qty (17) 0.75" Round Balusters (**for 8ft Kit**)  
Qty (4) Horizontal Brackets w/stair adapters  
Qty (8) Bracket to Post fasteners  
Qty (12) Bracket to Rail fasteners  
Qty (1) Adjustable "2017 Relaunch" Footblock



**Trex Part #: PBKENHZBKT**

**Description:** Select Mounting Hardware (HZ)



**Bill of Materials**

- Qty (8) Bracket to Post fasteners
- Qty (12) Bracket to Rail fasteners
- Qty (4) Railing Brackets



**Trex Part #: PBKENSTBKT**

**Description:** Select Mounting Hardware (Stair)



**Bill of Materials**

- Qty (8) Bracket to Post fasteners
- Qty (12) Bracket to Rail fasteners
- Qty (4) Railing Brackets
- Qty (4) Railing Bracket Stair Adapters



**Trex Part #: WT0636HSELK / WT0836HSELK**

**Description:** 6ft / 8ft x 36" Rail Kit with Square Balusters - Horizontal



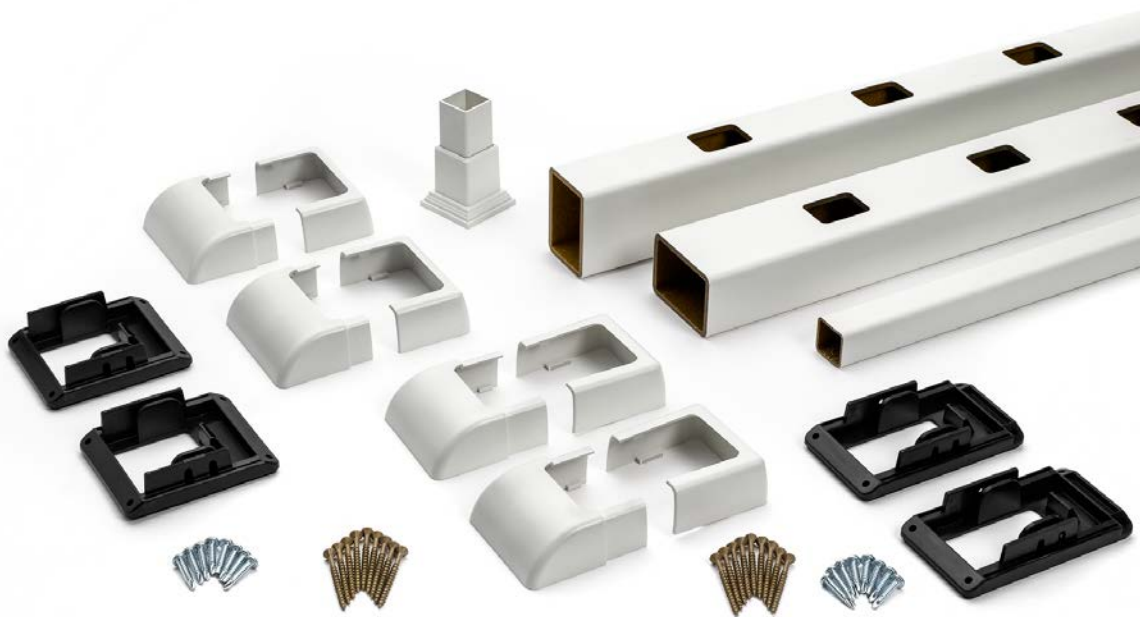
**Bill of Materials**

- Qty (1) Horizontal Top Rail
- Qty (1) Horizontal Bottom Rail
- Qty (13) 1.125" Square Balusters **(for 6ft Kit)**
- Qty (18) 1.125" Square Balusters **(for 8ft Kit)**
- Qty (4) Horizontal Brackets
- Qty (4) Horizontal Bracket Cover sets
- Qty (16) Bracket to Post fasteners
- Qty (16) Bracket to Rail fasteners
- Qty (1) Adjustable Footblock



**Trex Part #: WT0636SSELK / WT0836SSELK**

**Description:** 6ft / 8ft x 36" Rail Kit with Square Balusters - Stair



**Bill of Materials**

- Qty (1) Stair Top Rail
- Qty (1) Stair Bottom Rail
- Qty (11) 1.125" Square Balusters **(for 6ft Kit)**
- Qty (15) 1.125" Square Balusters **(for 8ft Kit)**
- Qty (2) Stair Top Rail Brackets
- Qty (2) Stair Bottom Rail Brackets
- Qty (2) Stair Top Rail Bracket Cover sets
- Qty (2) Stair Bottom Rail Bracket Cover sets
- Qty (16) Bracket to Post fasteners
- Qty (16) Bracket to Rail fasteners
- Qty (1) Adjustable Footblock





**Trex Part #:** WTHSELCUT

**Description:** Mounting Hardware for Cut Rails- Horizontal

**UOM:** Bag of 1

**Purpose:** Supplementary brackets for cut rail sections.



### Bill of Materials

- Qty (4) Horizontal Brackets
- Qty (4) Horizontal Bracket Cover sets
- Qty (16) Bracket to Post fasteners
- Qty (16) Bracket to Rail fasteners



**Trex Part #:** WTSSELCUT

**Description:** Mounting Hardware for Cut Rails- Stair

**UOM:** Bag of 1

**Purpose:** Supplementary brackets for cut rail sections.



### Bill of Materials

- Qty (2) Stair Top Rail Brackets
- Qty (2) Stair Bottom Rail Brackets
- Qty (2) Stair Top Rail Bracket Cover sets
- Qty (2) Stair Bottom Rail Bracket Cover sets
- Qty (16) Bracket to Post fasteners
- Qty (16) Bracket to Rail fasteners

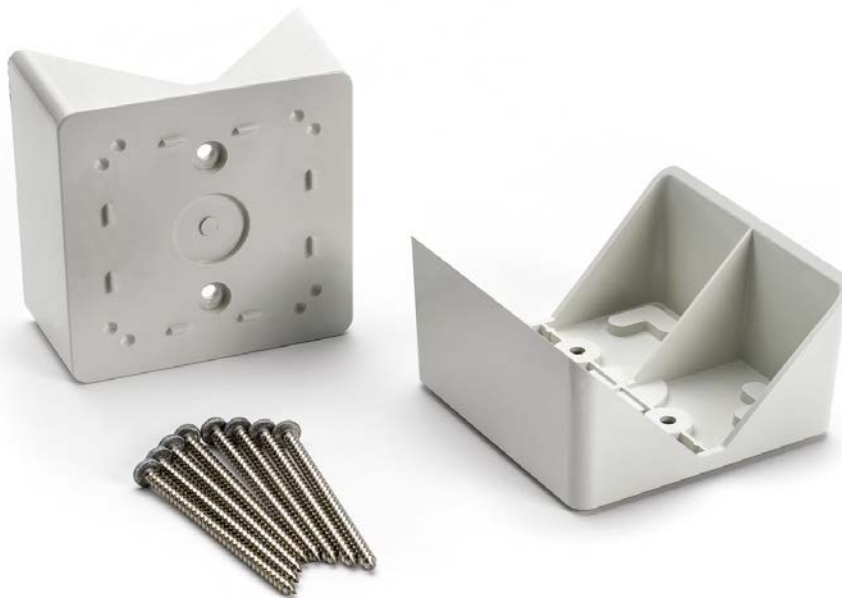


**Trex Part #:** WTSEL45ADP

**Description:** 45 Degree Bracket Adapter – Horizontal Only

**UOM:** Bag of 1

**Purpose:** Adapter for angled horizontal applications.



### **Bill of Materials**

Qty (2) 45 Degree Adapters

Qty (8) Bracket to Post fasteners

# Trex<sup>®</sup>Signature<sup>®</sup>

## ALUMINUM RAILING

**Trex Part #:** xxAL252537RCAP / xxAL252543RCAP / xxAL252553RCAP

**Description:** 2.5" x 2.5" x 37"/ 43"/ 53" Aluminum Post with Cap and Skirt

**Purpose:** IRC Compliant Post for residential applications of 3 stories or less.



### Bill of Materials

Qty (1) 2.5" x 2.5" Aluminum Surface Mount Post

Qty (1) Post Cap

Qty (1) 2pc Post Skirt

Qty (2) Post shims

# Trex<sup>®</sup>Signature<sup>®</sup>

## ALUMINUM RAILING

**Trex Part #:** xxAL252537RCAP / xxAL252543RCAP

**Description:** 2.5" x 2.5" x 37"/ 43" Aluminum Crossover Post with Skirt

**Purpose:** IRC Compliant Crossover Post for residential applications



### Bill of Materials

Qty (1) 2.5" x 2.5" Aluminum Surface Mount Crossover Post

Qty (1) Pre-mounted Horizontal Bracket

Qty (1) 2pc Post Skirt

Qty (2) Post shims

# Trex<sup>®</sup>Signature<sup>®</sup>

## ALUMINUM RAILING

**Trex Part #:** XXJMNTPOST63 (XX = BK, WT, BZ)

**Description:** Joist Mount Post for Elevations and wood substructure

**Purpose:** Eliminates wood 4X4 in Elevations and wood substructures, allows for mounting both inside deck frame and outside (fascia mount)



### Bill of Materials

- Qty (1) 63" Aluminum post (*cut-to-length*)
- Qty (1) Aluminum Post Cap
- Qty (1) Aluminum Post Skirt
- Qty (2) HG 1/2" bolts, washers (coated)
- Qty (2) HG 1/2" Washers & nuts (uncoated)
- Qty (1) Bolt spacing template

# Trex<sup>®</sup>Signature<sup>®</sup>

ALUMINUM RAILING

**Trex Part #: CPJMNTPOST63**

**Description:** Fascia Mount Post – For Composite Sleeves

**Purpose:** Joist Mount Post designed to be used with a Trex Composite Sleeve. Not intended for fascia mount applications.



## **Bill of Materials**

Qty (1) 63" Joist Mount Post

Qty (16) Aluminum screws

Qty (2) Aluminum Spacers

Qty (2) Aluminum Spacer Set Screws

# Trex<sup>®</sup>Signature<sup>®</sup>

## ALUMINUM RAILING

**Trex Part #:** XXFMNTWOOD (XX = BK, WT, BZ)

**Description:** Fascia Mount Bracket – Wood

**Purpose:** Required for the mounting of the Joist Mount Post, for fascia mount applications only (post mounted to the outside of the deck frame).

Suitable for wood applications utilizing minimum of 2x8 framing.



### Bill of Materials

Qty (1) Fascia Mount Bracket - Wood



# Trex<sup>®</sup>Signature<sup>®</sup>

## ALUMINUM RAILING

**Trex Part #:** XXFMNTELEV (XX = BK, WT, BZ)

**Description:** Fascia Mount Bracket – Elevations

**Purpose:** Required for the mounting of the Joist Mount Post, for fascia mount applications only (post mounted to the outside of the deck frame).

Suitable for all Elevations<sup>®</sup> applications and all wood applications utilizing minimum of 2x10 framing.



### Bill of Materials

Qty (1) Fascia Mount Bracket

# Trex<sup>®</sup>Signature<sup>®</sup>

## ALUMINUM RAILING

**Trex Part #:** BKAS0636HRPNL, BKAS0642HRPNL, BKAS0836HRPNL, BKAS0842HRPNL

**Description:** HZ Reveal Panel (6x36", 6x42", 8x36", 8x42")

**Purpose:** Time saver for installers (note: Hardware BKFHBKFTAL must be ordered separately – 1 per panel)



### Bill of Materials

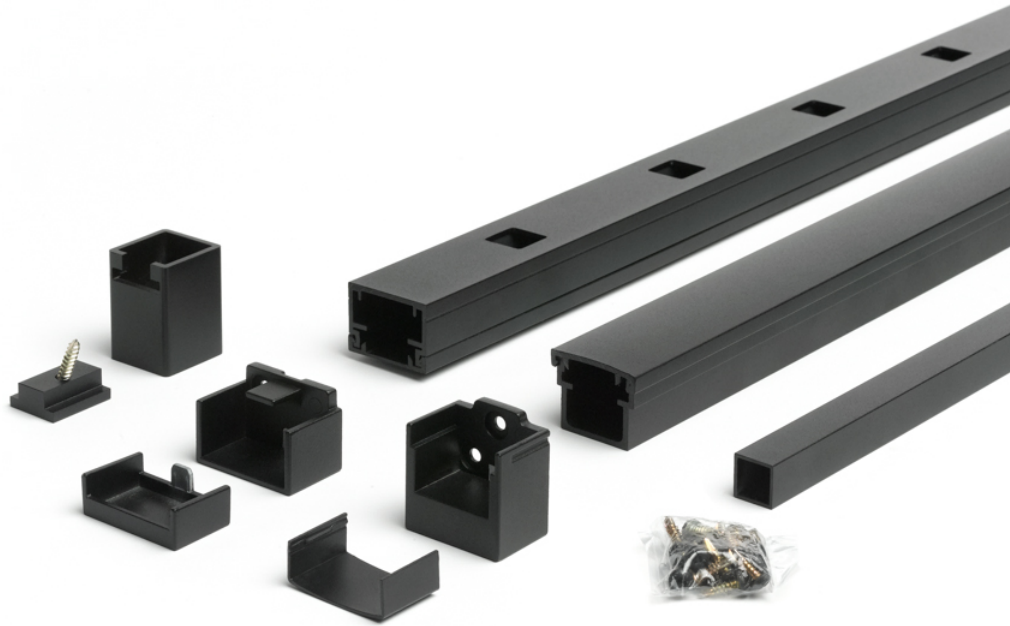
Qty (1) Reveal Panel (*sold in pallets of 20 only*)

# Trex<sup>®</sup>Signature<sup>®</sup>

## ALUMINUM RAILING

**Trex Part #:** xxAS0636HRK / xxAS0836HRK / xxAR0636HRK / xxAR0836HRK  
xxAS0642HRK / xxAS0842HRK / xxAR0642HRK / xxAR0842HRK

**Description:** 6ft / 8ft x 36"/ 42" Rail Kit with Square / Round Balusters - Horizontal



### Bill of Materials

- Qty (1) Top Rail and Top Rail Cover
- Qty (1) Bottom Rail and Bottom Rail Cover
- Qty (1) Square / Round "Fixed" Baluster with Fasteners
- Qty (15) 3/4" Square / Round Baluster (**6ft Kit**) including fixed baluster
- Qty (20) 3/4" Square / Round Baluster (**8ft Kit**) including fixed baluster
- Qty (2) Fixed Top Rail Bracket and Cover - Horizontal
- Qty (2) Fixed Bottom Rail Bracket and Cover - Horizontal
- Qty (1) Fastener Pack  
(Screws for attachment to AL Posts & Screws for attachment to Composite Post)
- Qty (1) Al Footblock (**8ft HZ Kit ONLY**)

# Trex<sup>®</sup>Signature<sup>®</sup>

## ALUMINUM RAILING

**Trex Part #:** xxAS0636SRK / xxAS0836SRK / xxAR0636SRK / xxAR0836SRK  
xxAS0642SRK / xxAS0842SRK / xxAR0642SRK / xxAR0842SRK

**Description:** 6ft / 8ft x 36"/ 42" Rail Kit with Square / Round Balusters - Stair



### Bill of Materials

Qty (1) Top Rail and Top Rail Cover

Qty (1) Bottom Rail and Bottom Rail Cover

Qty (13) ¾" Square / Round Baluster (**6ft Kit**)

Qty (17) ¾" Square / Round Baluster (**8ft Kit**)

Qty (1) Fixed Top Rail Bracket 1 and Cover- Stair

Qty (1) Fixed Top Rail Bracket 2 and Cover- Stair

Qty (1) Fixed Bottom Rail Bracket 1 and Cover - Stair

Qty (1) Fixed Bottom Rail Bracket 2 and Cover - Stair

Qty (1) Fastener Pack

(Screws for attachment to AL Posts & Screws for attachment to Composite Post)

# Trex<sup>®</sup>Signature<sup>®</sup>

## ALUMINUM RAILING

**Trex Part #:** XXFHBKTAL (XX = BK, WT, BZ)

**Description:** Fixed Bracket (4-Pack) – Horizontal (aka Cut Kit)

**UOM:** Bag of 1

**Purpose:** Supplementary brackets for cut rail sections.



### Bill of Materials

Qty (2) Fixed Top Rail Bracket and Cover - Horizontal

Qty (2) Fixed Bottom Rail Bracket and Cover - Horizontal

Qty (1) Fastener Pack

(Screws for attachment to AL Posts & Screws for attachment to Composite Post)

# Trex<sup>®</sup>Signature<sup>®</sup>

## ALUMINUM RAILING

**Trex Part #:** XXFSBKTAL (XX = BK, WT, BZ)

**Description:** Fixed Bracket (4-Pack) – Stair (aka Cut Kit)

**UOM:** Bag of 1

**Purpose:** Supplementary brackets for cut rail sections.  
\* 32-37 degree installations



### Bill of Materials

Qty (1) Fixed Top Rail Bracket 1 and Cover- Stair

Qty (1) Fixed Top Rail Bracket 2 and Cover- Stair

Qty (1) Fixed Bottom Rail Bracket 1 and Cover - Stair

Qty (1) Fixed Bottom Rail Bracket 2 and Cover - Stair

Qty (1) Fastener Pack

(Screws for attachment to AL Posts & Screws for attachment to Composite Post)

# Trex<sup>®</sup>Signature<sup>®</sup>

## ALUMINUM RAILING

**Trex Part #:** XX25RCSWSCBK TAL (XX = BK, WT, BZ)

**Description:** 2.5" IRC Swivel Crossover Bracket Kit – Stair

**UOM:** Bag of 1

**Purpose:** To be used in combination with 2.5x2.5x53" Cut-to-Length Post (xxAL252553AP) for Crossover Stair applications.



### Bill of Materials

Qty (1) Swivel Crossover Bracket – Stair

Qty (2) Post to Bracket Fasteners

# Trex<sup>®</sup>Signature<sup>®</sup>

## ALUMINUM RAILING

**Trex Part #:** XXSWHBKTAL (XX = BK, WT, BZ)

**Description:** Swivel Bracket– Horizontal

**UOM:** Bag of 1

**Purpose:** For angled horizontal applications, used in place of fixed horizontal brackets.



### Bill of Materials

Qty (1) Swivel Top Rail Bracket and Cover – Horizontal

Qty (1) Swivel Bottom Rail Bracket and Cover – Horizontal

Qty (2) Fastener Covers

Qty (1) Fastener Pack

(Screws for attachment to AL Posts & Rails)



# Trex<sup>®</sup>Signature<sup>®</sup>

## ALUMINUM RAILING

**Trex Part #:** XXSWSBK TAL (XX = BK, WT, BZ)

**Description:** Swivel Bracket– Stair

**UOM:** Bag of 1

**Purpose:** An alternative option for stair installations, used in place of fixed stair brackets.  
\* 32-37 degree installations



### Bill of Materials

- Qty (1) Swivel Top Rail Bracket and Cover – Stair
- Qty (1) Swivel Bottom Rail Bracket and Cover – Stair
- Qty (2) Fastener Covers
- Qty (1) Fastener Pack  
(Screws for attachment to AL Posts & Rails)

# Trex<sup>®</sup>Signature<sup>®</sup>

## ALUMINUM RAILING

**Trex Part #:** XXCPDSWBKTAL (XX = BK, WT, BZ)

**Description:** Compound Swivel Bracket - Stair

**UOM:** Bag of 1

**Purpose:** For flared stair installations, used in place of fixed stair brackets.



### Bill of Materials

Qty (1) Compound Swivel Top Rail Bracket and Cover – Stair

Qty (1) Compound Swivel Bottom Rail Bracket and Cover – Stair

Qty (2) Fastener Covers

Qty (1) Fastener Pack

(Screws for attachment to AL Posts & Rails)

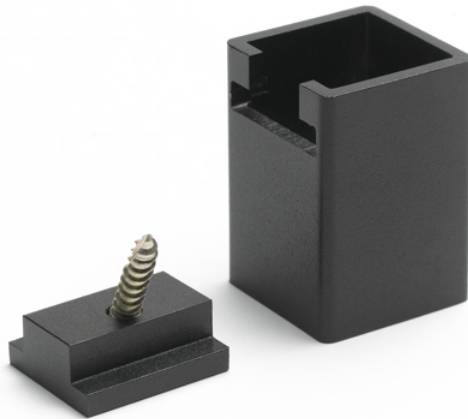
# Trex<sup>®</sup>Signature<sup>®</sup>

## ALUMINUM RAILING

**Trex Part #:** XXALFTBLK (XX = BK, WT, BZ)

**Description:** Aluminum Footblock

**UOM:** Bag of 1



### Bill of Materials

Qty (1) Footblock

Qty (1) Footblock Anchor and fastener

# Trex<sup>®</sup>Signature<sup>®</sup>

ALUMINUM RAILING

**Trex Part #:** XXTOUCHUPPEN (XX = BK, WT, BZ)

**Description:** Signature Touch-up Pen

**UOM:** Bag of 1



## Bill of Materials

Qty (1) Touch-up Pen

# Trex<sup>®</sup>Signature<sup>®</sup>

ALUMINUM RAILING

**Trex Part #:** XXCTBKTAL10PK (XX = BK, WT, BZ)

**Description:** Signature Cocktail Bracket 10-Pack

*Use 1 bracket approximately every 2' and as close to each post as possible.*

**UOM:** Box of 10



**Bill of Materials**

Qty (10) Cocktail Brackets

Qty (40) Color-matched screws

# TrexSignature®

ALUMINUM RAILING

**Trex Part #: SIGCOMPOSITETEMP**

**Description:** Signature Bracket Template  
Horizontal Only – Composite Sleeves Only

**UOM:** Box of 1



## Bill of Materials

Qty (1) Signature Template

# TrexSignature®

ALUMINUM RAILING

**Trex Part #:** SIG25ALPOSTTEMP

**Description:** Signature Bracket Template  
Horizontal Only – 2.5" Aluminum Posts Only

**UOM:** Box of 1



## Bill of Materials

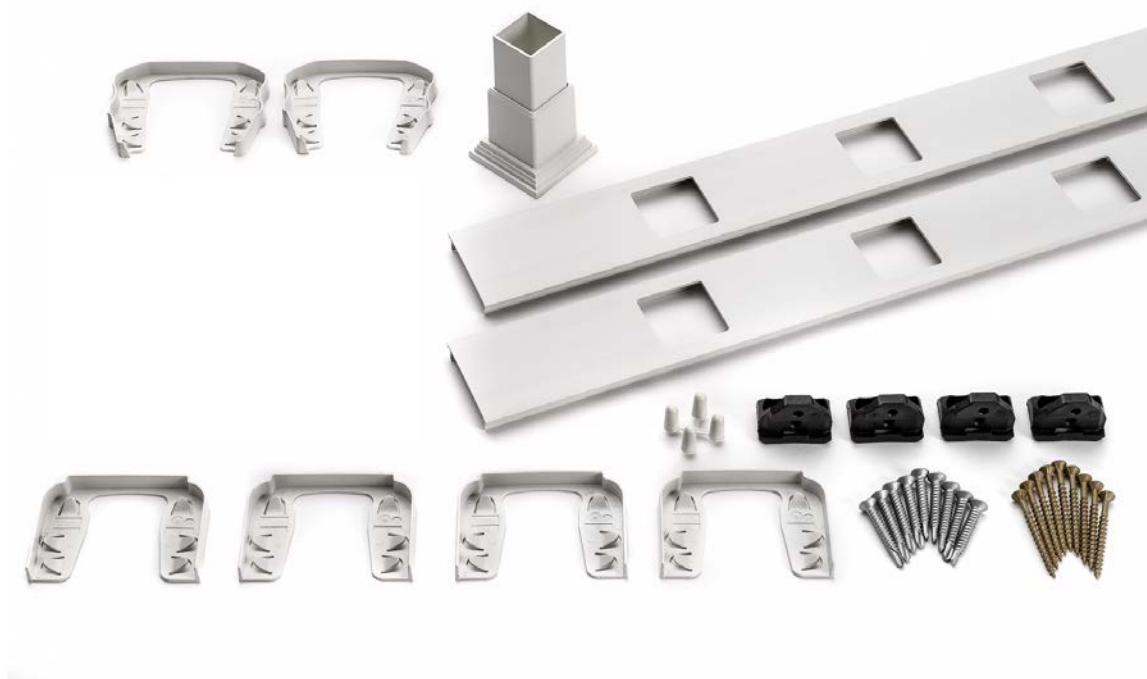
Qty (1) Signature Template



**Trex Part #:** xxSQHIK06 / xxSQHIK08 (xx = WT, BK, VL, GP, RS, FP, TH)

**Description:** Accessory Infill Kit for 1.4" Square Balusters (6ft & 8ft) - Horizontal

**Purpose:** Component hardware to construct 1.4" Square baluster infill design- Horizontal



#### **Bill of Materials**

Qty (2) 67.5" or 91.5" Baluster Spacers for 1.4" Square Balusters - Horizontal

Qty (1) Adjustable Footblock

Qty (2) Crown Top Rail Gaskets- Horizontal

Qty (4) Universal Top/Bottom Rail Gaskets- Horizontal

Qty (4) RSB Rail Brackets

Qty (8) Rail to Bracket Fasteners- Horizontal

Qty (8) Rail to Post Fasteners

Qty (4) Screw Tip Covers



# Trex Transcend®

## RAILING

**Trex Part #:** xxSQSIK06 / xxSQSIK08 (xx = WT, BK, VL, GP, RS, FP, TH)

**Description:** Accessory Infill Kit for 1.4" Square Balusters (6ft & 8ft) - Stair

**Purpose:** Component hardware to construct 1.4" Square baluster infill design- Stair



### Bill of Materials

Qty (2) 67.5" or 91.5" Baluster Spacers for 1.4" Square Balusters - Stair

Qty (1) Adjustable Footblock

Qty (1) Crown Top 1 Rail Gaskets- Stair

Qty (1) Crown Top 2 Rail Gaskets- Stair

Qty (2) Universal Top/Bottom 1 Rail Gaskets- Stair

Qty (2) Universal Top/Bottom 2 Rail Gaskets- Stair

Qty (8) RSB Rail Brackets

Qty (8) Rail to Bracket Fasteners - Stair

Qty (8) Rail to Post Fasteners

Qty (4) Screw Tip Covers



**Trex Part #:** xxRDHIK06 / xxRDHIK08 (xx = WT, BK, VL, GP, RS, FP, TH)

**Description:** Accessory Infill Kit for 3/4" Round AL Balusters (6ft & 8ft) - Horizontal

**Purpose:** Component hardware for 3/4" Round Aluminum Balusters –Horizontal Install



**Bill of Materials**

Qty (2) 67.5" or 91.5" Baluster Spacers for 3/4" Round AL Balusters - Horizontal

Qty (1) Adjustable Footblock

Qty (2) Crown Top Rail Gaskets- Horizontal

Qty (4) Universal Top/Bottom Rail Gaskets- Horizontal

Qty (4) RSB Rail Brackets

Qty (8) Rail to Bracket Fasteners- Horizontal

Qty (8) Rail to Post Fasteners

Qty (2) 64.75" or 88.75" Aluminum Baluster Adapter Strips

Qty (4) Screw Tip Covers

# Trex Transcend®

## RAILING

**Trex Part #:** xxRDSIK06 / xxRDSIK08 (xx = WT, BK, VL, GP, RS, FP, TH)

**Description:** Accessory Infill Kit for ¾" Round AL Balusters (6ft & 8ft) - Stair

**Purpose:** Component hardware for ¾" Round Aluminum Balusters –Stair Install



### Bill of Materials

- Qty (2) 67.5" or 91.5" Baluster Spacers for ¾" Round AL Balusters - Stair
- Qty (1) Adjustable Footblock
- Qty (1) Crown Top 1 Rail Gaskets- Stair
- Qty (1) Crown Top 2 Rail Gaskets- Stair
- Qty (2) Universal Top/Bottom 1 Rail Gaskets- Stair
- Qty (2) Universal Top/Bottom 2 Rail Gaskets- Stair
- Qty (8) RSB Rail Brackets
- Qty (8) Rail to Bracket Fasteners - Stair
- Qty (8) Rail to Post Fasteners
- Qty (2) 64.75" or 88.75" Aluminum Baluster Adapter Strips
- Qty (4) Screw Tip Covers

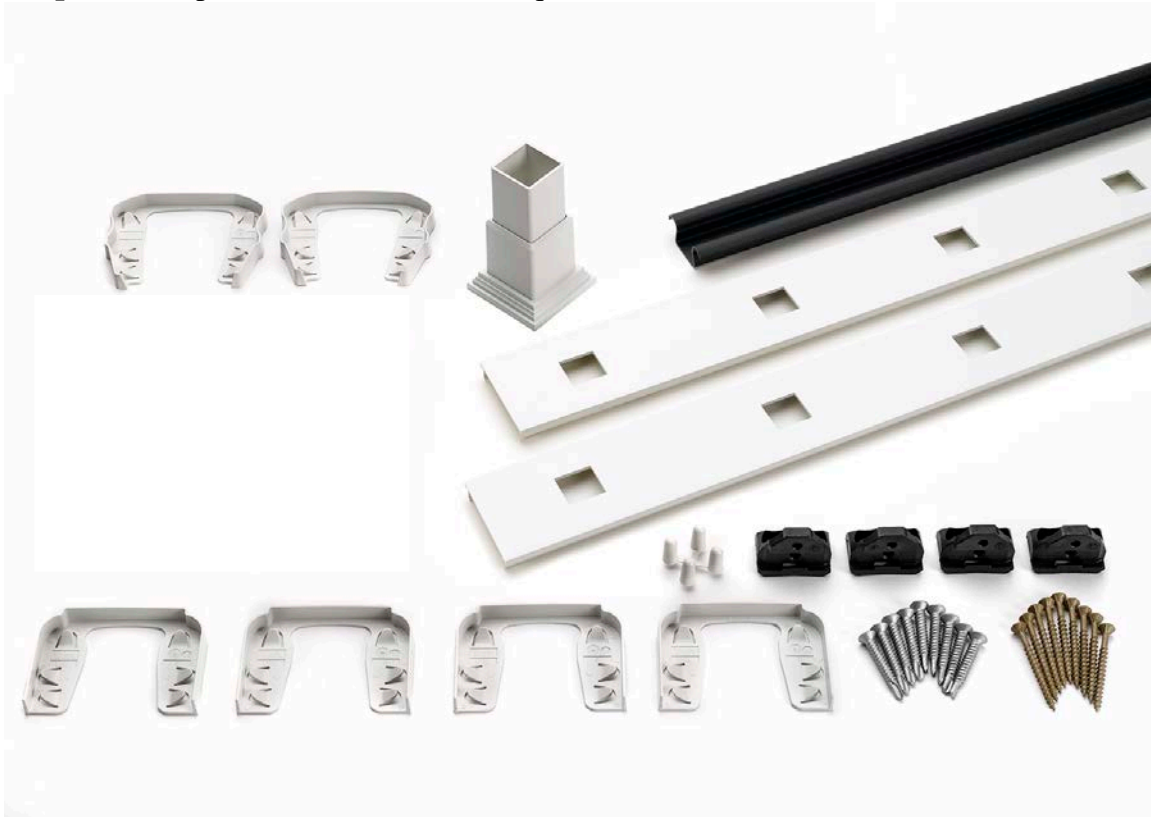
# Trex Transcend®

## RAILING

**Trex Part #:** xxASBHIK06 / xxASBHIK08 (xx = WT, BK, VL, GP, RS, FP, TH)

**Description:** Accessory Infill Kit for ¾" Square AL Balusters (6ft & 8ft) - Horizontal

**Purpose:** Component hardware for ¾" Square Aluminum Balusters –Horizontal Install



### Bill of Materials

Qty (2) 67.5" or 91.5" Baluster Spacers for ¾" Square AL Balusters - Horizontal

Qty (1) Adjustable Footblock

Qty (2) Crown Top Rail Gaskets- Horizontal

Qty (4) Universal Top/Bottom Rail Gaskets- Horizontal

Qty (4) RSB Rail Brackets

Qty (8) Rail to Bracket Fasteners- Horizontal

Qty (8) Rail to Post Fasteners

Qty (2) 64.75" or 88.75" Aluminum Baluster Adapter Strips

Qty (4) Screw Tip Covers

# Trex Transcend®

## RAILING

**Trex Part #:** xxASBSIK06 / xxASBSIK08 (xx = WT, BK, VL, GP, RS, FP, TH)

**Description:** Accessory Infill Kit for ¾" Square AL Balusters (6ft & 8ft) - Stair

**Purpose:** Component hardware for ¾" Square Aluminum Balusters –Stair Install



### Bill of Materials

Qty (2) 67.5" or 91.5" Baluster Spacers for ¾" Square AL Balusters - Stair

Qty (1) Adjustable Footblock

Qty (1) Crown Top 1 Rail Gaskets- Stair

Qty (1) Crown Top 2 Rail Gaskets- Stair

Qty (2) Universal Top/Bottom 1 Rail Gaskets- Stair

Qty (2) Universal Top/Bottom 2 Rail Gaskets- Stair

Qty (8) RSB Rail Brackets

Qty (8) Rail to Bracket Fasteners - Stair

Qty (8) Rail to Post Fasteners

Qty (2) 64.75" or 88.75" Aluminum Baluster Adapter Strips

Qty (4) Screw Tip Cover

# Trex Transcend®

## RAILING

**Trex Part #:** xxGLIK06 (xx = WT, BK, VL, GP, RS, FP, TH)

**Description:** Accessory Infill Kit for Glass Panel– Horizontal ONLY  
(Glass Sold Separately)

**Purpose:** Component hardware to construct Glass Panel infill design- Horizontal



### Bill of Materials

- Qty (4) 67.5" Panel Support Moldings for Glass Panel
- Qty (2) Glass edge trim gasket
- Qty (1) 8.5" Baluster Strip Trim
- Qty (1) Adjustable Footblock
- Qty (2) Crown Top Rail Gaskets- Horizontal
- Qty (4) Universal Top/Bottom Rail Gaskets- Horizontal
- Qty (4) RSB Rail Brackets
- Qty (8) Rail to Bracket Fasteners - Horizontal
- Qty (8) Rail to Post Fasteners
- Qty (4) Screw Tip Covers



**Trex Part #:** xxHZACCYKIT (xx = WT, BK, VL, GP, RS, FP, TH)

**Description:** Mounting Hardware for Cut Rails - Horizontal (aka Cut Kit)

**UOM:** Bag of 1

**Purpose:** Supplementary brackets for cut rail sections



**Bill of Materials**

- Qty (2) Crown Top Rail Gaskets- Horizontal
- Qty (4) Universal Top/Bottom Rail Gaskets- Horizontal
- Qty (4) RSB Rail Brackets
- Qty (8) Rail to Bracket Fasteners- Horizontal
- Qty (8) Rail to Post Fasteners
- Qty (4) Screw Tip Covers



# Trex Transcend®

## RAILING

**Trex Part #:** xxSTACCYKIT (xx = WT, BK, VL, GP, RS, FP, TH)

**Description:** Mounting Hardware for Cut Rails - Stair (aka Cut Kit)

**UOM:** Bag of 1

**Purpose:** Supplementary brackets for cut rail sections



### Bill of Materials

- Qty (1) Crown Top 1 Rail Gaskets- Stair
- Qty (1) Crown Top 2 Rail Gaskets- Stair
- Qty (2) Universal Top/Bottom 1 Rail Gaskets- Stair
- Qty (2) Universal Top/Bottom 2 Rail Gaskets- Stair
- Qty (8) RSB Rail Brackets
- Qty (8) Rail to Bracket Fasteners - Stair
- Qty (8) Rail to Post Fasteners
- Qty (4) Screw Tip Covers





**Trex Part #: TSHBRACKET**

**Description:** RSB Bracket Pack - Horizontal

**UOM:** Bag of 1

**Purpose:** Supplementary brackets and fasteners



**Bill of Materials**

Qty (4) RSB Rail Brackets

Qty (8) Rail to Bracket Fasteners- Horizontal

Qty (8) Rail to Post Fasteners



**Trex Part #: TSSBRACKET**

**Description:** RSB Bracket Pack – Stair

**UOM:** Bag of 1

**Purpose:** Supplementary brackets and fasteners



**Bill of Materials**

Qty (8) RSB Rail Brackets

Qty (8) Rail to Bracket Fasteners - Stair

Qty (8) Rail to Post Fasteners



**Trex Part #:** xx00HGASK (xx = WT, BK, VL, GP, RS, FP, TH)

**Description:** 0 Degree Rail Gasket Pack – Horizontal

**UOM:** Bag of 1

**Purpose:** Replacement Gaskets for 0 degree – Horizontal installations  
(Gaskets to equip one full section in any rail configuration)

**Rail Profile:** Crown Top Rail, Universal Top/Bottom Rail



**Bill of Materials**

Qty (2) Crown Top Rail Gaskets- Horizontal

Qty (4) Universal Top/Bottom Rail Gaskets- Horizontal



**Trex Part #:** xx00SGASK (xx = WT, BK, VL, GP, RS, FP, TH)

**Description:** 0 Degree Rail Gasket Pack - Stair

**UOM:** Bag of 1

**Purpose:** Replacement Gaskets for 0 degree – Stair installations  
(Gaskets to equip one full section in any rail configuration)

**Rail Profile:** Crown Top Rail, **Universal** Top/Bottom Rail



**Bill of Materials**

Qty (1) Crown Top 1 Rail Gaskets- Stair

Qty (1) Crown Top 2 Rail Gaskets- Stair

Qty (2) Universal Top/Bottom 1 Rail Gaskets- Stair

Qty (2) Universal Top/Bottom 2 Rail Gaskets- Stair



**Trex Part #:** xx22HGASK (xx = WT, BK, VL, GP, RS, FP, TH)

**Description:** 22.5 Degree Rail Gasket Pack - Horizontal

**UOM:** Bag of 1

**Purpose:** Gaskets for 22.5 degree – Horizontal installations  
(Gaskets to equip one full section in any rail configuration)

**Rail Profile:** Crown Top Rail, Universal Top/Bottom Rail

**Post Size:** 4x4 or 6x6



**Bill of Materials**

Qty (2) Crown Top Rail Gaskets- 22.5

Qty (4) Universal Top/Bottom 1 Rail Gaskets- 22.5



**Trex Part #:** xx45RSBADAPK (xx = WT, BK, VL, GP, RS, FP, TH)

**Description:** 45 Degree “Birds-Mouth” Rail Gasket Pack – Horizontal

**UOM:** Bag of 1

**Purpose:** Gaskets for 45 degree – Horizontal installations

**Rail Profile:** Crown Top Rail & Universal Top/Bottom Rail

**Post Size:** 4x4 or 6x6



**Bill of Materials**

Qty (4) 45degree Adapters for RSB Rail Brackets

Qty (2) Crown Top Rail Birds-mouth Gaskets- 45

Qty (4) Universal Top/Bottom Rail Birds-mouth Gaskets- 45



**Trex Part #:** WT45HGASK (xx = WT, BK, VL, GP, RS, FP, TH)

**Description:** 45 Degree Rail Gasket Pack - Horizontal

**UOM:** Bag of 1

**Purpose:** Gaskets for 45 degree – Horizontal installations

**Rail Profile:** Crown Top Rail & Universal Top/Bottom Rail

**Post Size:** 6x6 ONLY



**Bill of Materials**

Qty (2) Crown Top Rail Gaskets- 45

Qty (4) Universal Top/Bottom Rail Gaskets- 45



**Trex Part #:** xxFTBLK (xx = WT, BK, VL, GP, RS, FP, TH)

**Description:** Adjustable Footblock

**UOM:** Box of 50



**Bill of Materials**

Qty (1) Adjustable Footblock

Qty (1) Base and Base Fastener

Qty (1) Locking Fastener and Screw Cap



# Trex® Outdoor Lighting™

## TRANSFORMER CAPACITY BY TYPE

Type of Light	5A Transformer (DL TRANSFORMER)	2.5A Transformer (2.5 DL TRANSFORMER)	8.3A Transformer (83 DL TRANSFORMER)
Riser	180	90	285
Recessed	180	90	285
Post Cap	55	22	85
Deck Rail	180	90	285

Above listing is for maximum number of each individual types of lights. If mixing and matching lighting, contact Trex to determine if more than one transformer is required.

## TRANSFORMER CAPACITY BY TYPE

Type of Light	5A Transformer (DL TRANSFORMER)	2.5A Transformer (2.5 DL TRANSFORMER)	8.3A Transformer (83 DL TRANSFORMER)
Well Light	46	23	74
Path Light	31	16	52
Wall Wash Light	31	16	52

Above listing is for maximum number of each individual types of lights. If mixing and matching lighting, contact Trex to determine if more than one transformer is required.

## TRANSFORMER CAPACITY BY TYPE

Type of Light	5A Transformer (DL TRANSFORMER)	8.3A Transformer (83 DL TRANSFORMER)
Spotlight	7	12

Above listing is for maximum number of each individual types of lights. If mixing and matching lighting, contact Trex to determine if more than one transformer is required.

# Trex® Outdoor Lighting™

**Trex Part #:** xxSPOT

**Description:** LED Spotlight

**Colors:** (BK, BZ)

**UOM:** Box of (1)



## **Bill of Materials**

Qty (1) Trex Spotlight (featuring Cree Super LED)

Qty (1) Lighthub Male Wire

Qty (1) Female to Female Adapter

Qty (1) 12v to 36v Step-up Transformer

*(note: you will need DL5TFSPPLIT1PK to install more than one Spotlight per Transformer)*

# Trex® Outdoor Lighting™

**Trex Part #:** xxMULTI

**Description:** LED Multifunction Light

**Colors:** (BK, BZ)

**UOM:** Box of (1)



## Bill of Materials

Qty (1) Trex Multifunction Light

Qty (1) Lighthouse Male Wire

Qty (1) Female to Female Adapter

# Trex® Outdoor Lighting™

**Trex Part #:** xxWELL

**Description:** LED Well Light (with removable spike)

**Colors:** (BK, BZ)

**UOM:** Box of (1)



## Bill of Materials

Qty (1) Trex Well Light

Qty (1) Lighthouse Male Wire

Qty (1) Female to Female Adapter

# Trex® Outdoor Lighting™

**Trex Part #:** xxSPATH2PK

**Description:** LED Stepped Path Light (2-pack)

**Colors:** (BK, BZ)

**UOM:** Box of (2)



## **Bill of Materials**

Qty (2) Stepped Path Lights

Qty (1) Lighthouse Male Wire

Qty (1) Female to Female Adapter

# Trex® Outdoor Lighting™

**Trex Part #:** xxRDPATH2PK

**Description:** LED Round Path Light (2-pack)

**Colors:** (BK, BZ)

**UOM:** Box of (2)



## Bill of Materials

Qty (2) Round Path Lights

Qty (1) Lighthouse Male Wire

Qty (1) Female to Female Adapter

# Trex® Outdoor Lighting™

**Trex Part #:** xxSQLEDCAP4X4C

**Description:** LED Flat Post Cap Light

**Colors:** (WT, BK, FP, VL, TH, RS, GP)

**UOM:** Box of 1



## Bill of Materials

Qty (1) LED Cap Light w/6" Female Lighthub lead

Qty (1) Lighthub Male Wire (5')

# Trex® Outdoor Lighting™

**Trex Part #:** xxPYLEDCAP4X4C

**Description:** LED Pyramid Post Cap Light

**Colors:** (WT, BK, FP, VL, TH, RS, GP)

**UOM:** Box of 1



## Bill of Materials

Qty (1) LED Cap Light w/6" Female Lighthub lead

Qty (1) Lighthub Male Wire (5')



# Trex® Outdoor Lighting™

**Trex Part #: XXALCAPLED25**

**Description:** 2.5" Cap Light for Reveal posts

**Colors:** (BK, WT, BZ)

**UOM:** Blister pack of 1



## **Bill of Materials**

Qty (1) LED Cap Light w/6" Female Lighthub lead

Qty (1) Lighthub Male Wire (5')

# Trex® Outdoor Lighting™

**Trex Part #:** XXALPOSTLAMPLED

**Description:** Wedge Post Lamp (*for use with composite sleeves or aluminum posts*)

**Colors:** (BK, WT, BZ)

**UOM:** Blister pack of 1



## Bill of Materials

Qty (1) LED Wedge Post Lamp

Qty (1) Lighthouse Male Wire (5')

# Trex® Outdoor Lighting™

**Trex Part #:** xxRISERLED4PKC

**Description:** LED Riser Light 4-pack

**Colors:** (BK, WT, BK)

**UOM:** Bag of (4)



## Bill of Materials

Qty (4) LED Riser Lights w/6" Female Lighthub lead

Qty (1) Lighthub Male Wire (5')

# Trex® Outdoor Lighting™

**Trex Part #:** xxLAMPLEDC

**Description:** LED Post Lamp

**Colors:** (BK, WT, BK)

**UOM:** Bag of (1)



## **Bill of Materials**

Qty (1) LED Post Lamp w/6" Female Lighthub lead

Qty (1) Lighthub Male Wire (5')

# Trex® Outdoor Lighting™

**Trex Part #:** xxRECESSLED4PK

**Description:** LED Recessed Light 4-pack

**Colors:** N/A

**UOM:** Bag of (4)



## Bill of Materials

Qty (4) LED Recessed light w/6" Female Lighthub lead

Qty (1) Lighthub Male Wire (5')

# Trex® Outdoor Lighting™

**Trex Part #:** DL5TFSPPLIT1PK

**Description:** 5-way Transformer Splitter

**UOM:** Box of (1)



## **Bill of Materials**

Qty (1) 5-way TF splitter

*(Splits transformer connection for Spotlight and multi-zone installs)*

# Trex® Outdoor Lighting™

**Trex Part #:** DL6SPLIT4PK

**Description:** 6-way LightHub splitter

**UOM:** Bag of (4)



## Bill of Materials

Qty (4) 6-way Lighthub Splitters

# Trex® Outdoor Lighting™

**Trex Part #:** DL3SPLIT6PK

**Description:** 3-way LightHub splitter

**UOM:** Bag of (6)



## Bill of Materials

Qty (6) 3-way Lighthub Splitters



# Trex® Outdoor Lighting™

**Trex Part #: DLxxFTWRxPK**

**Description:** Male/Male Lighthouse extension wires

**Lengths:** 5', 10', 20', 40', 60'

**UOM:** *5' / 10' / 20' = 4 pack*  
*40' = 2 pack*  
*60' = 1 pack*



## **Bill of Materials**

Male Lighthouse Extension Cables  
(Silver Coated Outdoor Rated Copper Wire)

# Trex® Outdoor Lighting™

**Trex Part #: DLFADAP6PK**

**Description:** Female to Female Lighthouse Adapter

**UOM:** Bag of (6)



## **Bill of Materials**

Qty (6) Female to Female Lighthouse Adapters



**Trex Part #:** 83DLTRANSFORMER

**Description:** 100W 8.3a Trex Transformer

**UOM:** Box of (1)



**Bill of Materials**

Qty (1) 8.3a Trex Transformer

Qty (1) 15a Heavy Duty Trex Timer with Photocell

Qty (2) 20ft Lighthub Extension wire with Transformer Connection

# Trex® Outdoor Lighting™

**Trex Part #: 25DLTRANSFORMER**

**Description:** 30W 2.5a Trex Transformer

**UOM:** Box of (1)



## Bill of Materials

Qty (1) 2.5a Trex Transformer

Qty (1) Trex Timer with Photocell

Qty (1) 20ft Lighthouse Extension wire with Transformer Connection

# Trex® Outdoor Lighting™

**Trex Part #: DLDIMMER**

**Description:** Trex water resistant dimmer with programmable remote

**UOM:** Box of (1)



## Bill of Materials

Qty (1) Trex Dimmer

Qty (1) Trex Dimmer Remote

# Resources



Want to give your railing designs a test run? Mix and match colors, pre-design configurations and check railing item numbers for easy ordering with our **TREX® COLOR VISUALIZER**, now updated with all our railing lines. Simply download for free from the App Store to get started.



	BALUSTER TYPE	APPLICATION	PER 6" SECTION	PER 8" SECTION
TRANSCEND	Square & Colonial	Horizontal	13	18
	Square & Colonial	Stair	11	15
	Round Aluminum	Horizontal	15	20
	Round Aluminum	Stair	12	16
REVEAL	Square & Round	Horizontal	15	20
	Square & Round	Stair	12	17
SELECT	Square	Horizontal	13	18
	Square	Stair	11	15

## TREX TRANSCEND® RAILING

Vintage Lantern

Classic White

Fire Pit

Gravel Path

Rope Swing

Tree House

Charcoal Black

## TREX® REVEAL™ ALUMINUM RAILING

Charcoal Black

Bronze

Classic White

## TREXSELECT® RAILING

Classic White